

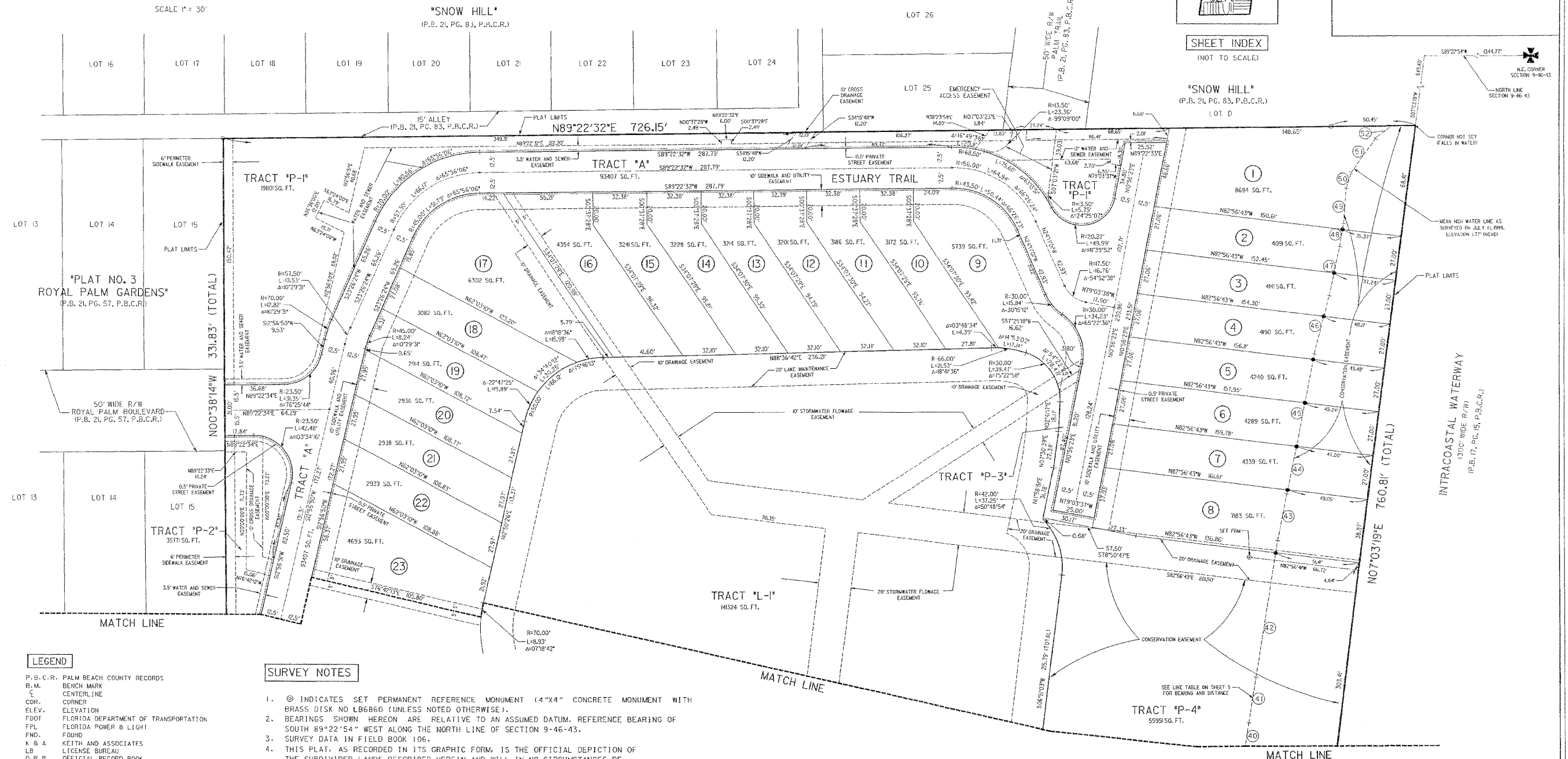
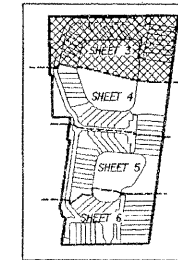
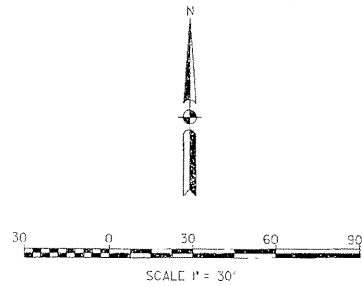
"ESTUARY"

A PLAT OF A PORTION OF SECTION 9, TOWNSHIP 46 SOUTH, RANGE 43 EAST
 ALSO BEING A REPLAT OF A PORTION OF "PLAT NO. 3 ROYAL PALM GARDENS", (P.B. 21, PG. 57, P.B.C.R.),
 A REPLAT OF A PORTION OF "HARRY SEEMILLER SUBDIVISION", (P.B. 9, PG. 72, P.B.C.R.),
 AND REPLAT OF A PORTION OF "LA-HACIENDA", (P.B. 15, PG. 6, P.B.C.R.)
 CITY OF DELRAY BEACH, PALM BEACH COUNTY, FLORIDA

SHEET 3 OF 6

77

COUNTY OF PALM BEACH
 STATE OF FLORIDA
 THIS PLAT WAS FILED FOR RECORD AT _____
 THIS _____ DAY OF _____
 1999, AND DULY RECORDED IN PLAT BOOK NO. _____
 AT PAGE(S) _____



LEGEND

P.B.C.R.	PALM BEACH COUNTY RECORDS
B.M.	BENCH MARK
C	CENTERLINE
COR.	CORNER
ELEV.	ELEVATION
FDOT	FLORIDA DEPARTMENT OF TRANSPORTATION
FPL	FLORIDA POWER & LIGHT
FND.	FOUND
K.B.A.	KEITH AND ASSOCIATES
LB	LICENSE BUREAU
O.R.B.	OFFICIAL RECORD BOOK
P.B.	PLAT BOOK
PG.	PAGE
P.S.M.	PROFESSIONAL SURVEYOR MAPPER
P.O.B.	POINT OF BEGINNING
P.O.C.	POINT OF COMMENCEMENT
P.R.M.	PERMANENT REFERENCE MONUMENT
ROE.	RANGE
R/W	RIGHT OF WAY
SEC.	SECTION
SO. FT.	SQUARE FEET
TWP.	TOWNSHIP
U.E.	UTILITY EASEMENT
W	WITH
-----	LIMITED ACCESS RIGHT OF WAY

- SURVEY NOTES**
- ① INDICATES SET PERMANENT REFERENCE MONUMENT (4"X4" CONCRETE MONUMENT WITH BRASS DISK NO. LB6860 (UNLESS NOTED OTHERWISE)).
 - BEARINGS SHOWN HEREON ARE RELATIVE TO AN ASSUMED DATUM. REFERENCE BEARING OF SOUTH 89°22'54" WEST ALONG THE NORTH LINE OF SECTION 9-46-43.
 - SURVEY DATA IN FIELD BOOK 106.
 - THIS PLAT, AS RECORDED IN ITS GRAPHIC FORM, IS THE OFFICIAL DEPICTION OF THE SUBDIVIDED LANDS DESCRIBED HEREIN AND WILL IN NO CIRCUMSTANCES BE SUPPLANTED IN AUTHORITY BY ANY OTHER GRAPHIC OR DIGITAL FORM OF THE PLAT. THERE MAY BE ADDITIONAL RESTRICTIONS THAT ARE NOT RECORDED ON THIS PLAT THAT MAY BE FOUND IN THE PUBLIC RECORDS OF THIS COUNTY.
 - THE CITY OF DELRAY BEACH IS HEREBY GRANTED THE RIGHT OF ACCESS FOR EMERGENCY AND MAINTENANCE PURPOSES.
 - THERE SHALL BE NO TREES OR SHRUBS PLACED ON UTILITY EASEMENTS WHICH ARE PROVIDED FOR WATER AND SEWER USE OR UPON DRAINAGE EASEMENTS. LANDSCAPING ON OTHER UTILITY EASEMENTS SHALL BE ALLOWED ONLY AFTER CONSENT OF ALL THE UTILITY COMPANIES OCCUPYING SAME.
 - UNLESS NOTED OTHERWISE, 5/8" IRON RODS WITH CAP NUMBER LB6860 SHALL BE PLACED AT ALL LOT CORNERS.
 - INDICATES 5/8" IRON ROD WITH CAP NO. LB6860 TO BE SET ON AN OFFSET TO LOT CORNER.

SEE SHEET 4 OF 6

PREPARED BY:
KEITH ASSOCIATES
 consulting engineers
 301 EAST ATLANTIC BOULEVARD
 POMPANO BEACH, FLORIDA 33060-6643
 19541788-3400 FAX19541788-3500
 EMAIL:KAA100@msn.com LB NO. 6860